

# Managing Change in Extensive SAP Landscapes with Rev-Trac



David Drake  
 Founder and  
 Chief Executive Officer,  
 Revelation Software  
 Concepts Pty Ltd

Companies today must manage change in their information systems more attentively, especially in the wake of the Sarbanes-Oxley Act. But even beyond compliance, businesses are making more system changes than ever before. Change management is no longer just a technical issue — it's become business-critical.

## A Fully Integrated Solution

SAP environments are constantly in a state of flux, especially in large, international organizations with extensive information access needs. IT divisions often find themselves in a dilemma — they would like to enhance SAP's own change management features, but doing

so using add-ons can create unexpected complications.

Rev-Trac change management software helps solve this dilemma. Rev-Trac's integration with SAP systems is fully SAP-certified, the software occupies its own namespace, and all change management functions are available from a single SAP transaction.

## One Change, Multiple Perspectives

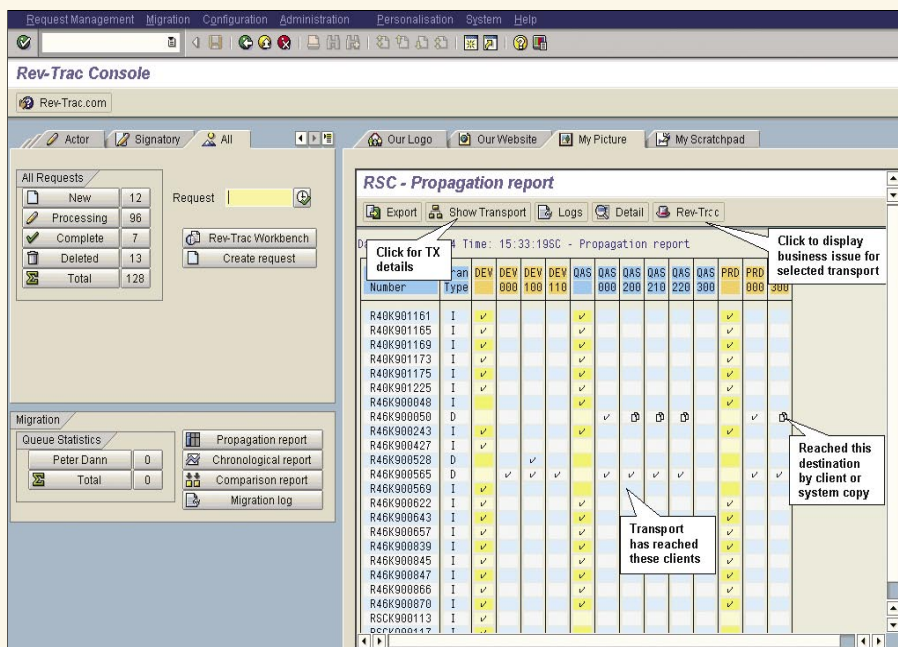
Users involved with changing SAP solutions see change from different perspectives. Business users want to know about overall progress — for example, the status of a new financial

report — while technical experts focus on the components required to resolve each issue. Rev-Trac intercepts every system change and requires users to relate it to a business issue with an appropriate set of approvals. From the Rev-Trac Console (see **Figure 1**) users can access a range of reports that correlate the business and technical views of all changes with drill-down in each direction.

Rev-Trac, RSC's SAP-specific change management solution, makes the meaning of system changes visible to all, reduces inadvertent parallel development, cuts overwriting errors, and provides a complete audit trail for every change. The result is a dramatically improved bottom line, both from a cost and compliance standpoint.

What's more, because Rev-Trac lives in SAP, TCO is very low. There are no hidden extras and no additional network security, disaster recovery plan, database administration, or desktop rollout requirements. Since you're running SAP, you've already got all you need to run Rev-Trac.

To manage change, especially in today's regulated business environment, an integrated change management solution is essential. For more information on Rev-Trac for SAP, visit [www.xfsc.com](http://www.xfsc.com)



**Figure 1** Rev-Trac Provides All Change Management Functions from a Single SAP Transaction