



Access all of your SAP® and non-SAP data quickly and cost-effectively

A new paradigm in enterprise reporting

As companies grow, the shape and location of their business information changes as data is relocated and new information sources evolve. IT departments face constant pressure to provide users with ways to collate and interpret this data quickly, at low cost.

xReports® by Revelation Software Concepts offers a new paradigm in enterprise reporting that directly addresses this need.

With xReports, your users can quickly access all the data they need, when they need it - regardless of where the data is located, with minimal development effort, and without compromising the performance or security of your databases and applications.

Display. Explore. Analyze.

With powerful, easy-to-use analytic functions automatically built into each report, xReports is more than a passive reporting tool.

Imagine giving your users the ability to drill down at will on a sales report:

- By customer, then by product category, then by discount rate, or
- By salesperson, then by product, then by month, or
- By product category, then by shipping destination, then by salesperson

- or by hundreds of other possible combinations, just by writing a simple query.

Imagine giving your users the power to perform Excel®-like pivot analyses on the fly - again, with no additional developer effort required.

xReports users can filter and summarise data, switch dynamically between different graphic views of the same data, or drill down to display the underlying details.

xReports is not just a tool for capturing and displaying data: it is a tool for thinking with.

Fast development. Fast performance.

xReports are typically developed and deployed within hours. The main development work consists of writing a suitable SQL statement, then choosing a report type and look-and-feel from an existing library. Even complex dashboards can be created and deployed within a day.

Behind a deceptively simple user interface, xReports offers outstanding performance. Queries may exploit the full power of each database (for example, using Oracle hints, views and stored procedures). xReports' advanced caching features reduce the need to re-run queries against relatively static information, while network compression ensures data reaches your screen quickly, even over low bandwidth connections.

Full access to SAP and non-SAP data

With xReports, you can quickly and easily extract and integrate live information from SAP and non-SAP applications, from data warehouse solutions, and from desktop databases or spreadsheets.

Access options

Users can access interactive xReports through their SAP GUI or an internet browser, and can schedule the automatic distribution of reports. Remote users can order reports via an email menu.

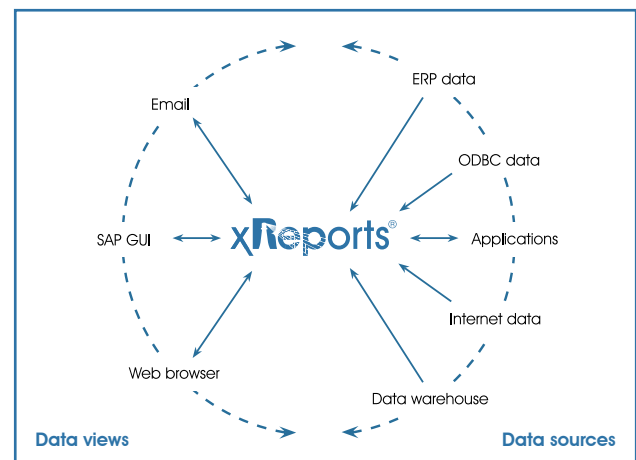


Figure 1: xReports data retrieval and viewing options.

Architecture

3 tier client-server (client, application server, database)

xReports client requirements

Browser with Java Runtime Environment enabled (Sun Java 2 JRE 1.4). Memory use is about 40 MB per browser session.

xReports application server requirements

Operating system: Windows, Solaris, Linux, HP-UX J2EE Server (e.g. Web Logic, Tomcat, JBoss, etc.), Java Development Kit 1.4.2.

xReports database requirements

Oracle database (running on any server)

Databases supported

xReports can retrieve SQL-based datasets from any combination of the following:

- Oracle
- DB2 UDB
- Microsoft SQL Server
- Informix
- Sybase
- Sybase SQL Anywhere
- Microsoft Access
- Lotus Domino
- DB2 MVS
- TeraData
- Adabas
- IMS
- Datacomm (ADR rdbms)
- SAPDB
- Any JDBC-compliant source
- Any ODBC-compliant datasource such as Excel

SAP requirements

To run xReports via the SAPGUI requires an SAP system running SAP BASIS version 4.6c or greater.

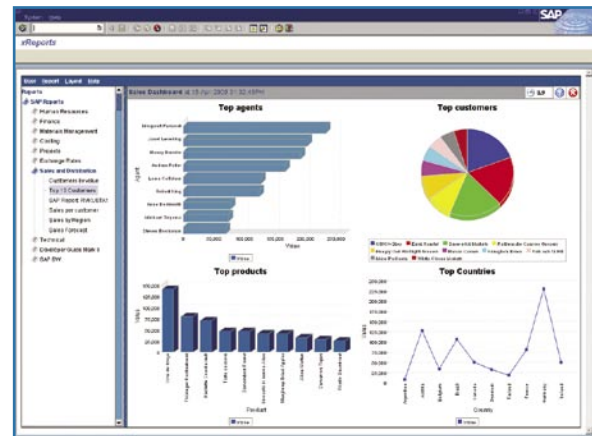
For more information, ask for a product demonstration of xReports today.

Revelation Software Concepts

Suite 8, 1020 Doncaster Road
Doncaster East, Victoria 3109 Australia

Telephone: +61 3 9841 4562

Web: www.xrsc.com



SAP integration

Users can access all xReports via their SAP GUI, including reports derived from non-SAP data.

xReports can obtain data from SAP, including pools and clusters, using the following access methods:

- SAP BAPI (SAP APIs)
- SAP remote function call
- SAP OpenSQL
- SAP report (running an existing SAP report)
- Direct SQL (with full database power)

ABAP programmers can extract data from any xReport using a defined interface and make this available within SAP.

Output formats

Besides the interactive browser-based Java applet, xReports supports the following output formats in native mode:

- PDF
- HTML
- XML
- Excel
- CSV
- TXT
- PNG
- RTF

xReports[®]
See it all. See it now.

SOFTWARE
SAP
PARTNER