

# Rev-Trac®

Now you're really in control



## Reduce risks and lower costs associated with SAP® change and request management for a lower SAP System TCO

**Rev-Trac: Automate and enforce your change control processes and tasks to manage changes in SAP solutions safely, flexibly and efficiently – even in the most diverse and dynamic environments.**

SAP®-based business information environments change constantly, especially in large, international organizations with extensive information processing needs. To keep your information flowing as your systems change, you need a powerful, flexible and fully-featured change control technology that helps you respond nimbly to business needs and changing regulatory mandates, managing all system changes safely, flexibly and efficiently.

That's what Rev-Trac® by Revelation Software Concepts gives you - flexible, powerful and fully-featured change control for SAP solutions, no matter how complex or geographically dispersed your SAP-based business environment.

### Rev-Trac operation

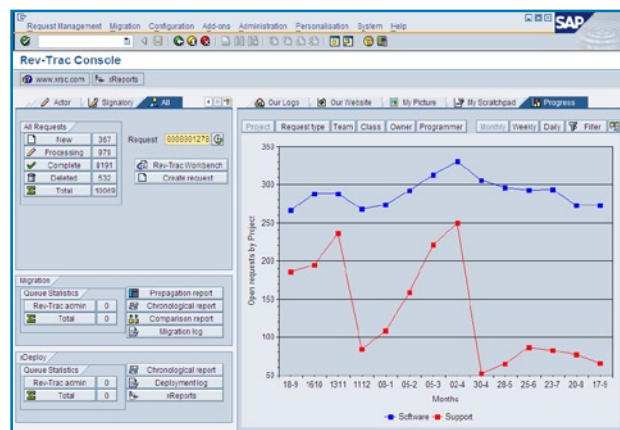
Compatible with all SAP solution-based systems from SAP 4.0 onwards, Rev-Trac:

- Lives inside its own namespace in SAP like an SAP module, monitoring all changes in the SAP landscape
- Intercepts every transport upon creation and forces users to relate it to a change request
- Progresses each change request using the rules, organizational model and approval processes you have decided are appropriate
- Automatically migrates changes in even the most complex of landscapes - with no need for detailed TMS configuration
- Continuously tracks the location of changes throughout your landscape, automatically accounting for the effect of copies, refreshes, restores and manual and automatic migrations
- Provides a complete audit trail of all system changes
- Detects and pre-emptively blocks potential transport sequencing errors
- Is built to SAP's own demanding standards, is written in SAP's native ABAP® language and uses familiar SAP screens, functions and passwords

### Key benefits

A mature and fully-featured SAP change control technology that has evolved in response to customer needs since 1997, Rev-Trac allows you to:

- Design, implement and enforce your own change control processes
- Track every change's full history for easy auditing
- Achieve consistency and cost savings via extensive process and task automation
- Prevent transport sequencing, overtake and overwrite accidents
- Maintain control within complex landscapes with advanced conflict management
- Ensure quality management of concurrent, simultaneous changes across multiple applications
- Automate multi-technology (ABAP, Java and other non-ABAP) change deployments, with or without CTS+
- Access via SAP GUI or web browser
- Interface with third-party tools via web services
- Administer, configure and extend easily
- Satisfy your CFR Part 11 electronic signature requirements
- Comply with Sarbanes-Oxley, Basel II, SAS 70 and ITIL standards





## Low cost of ownership – high ROI

With a fast install time, easy learning curve and many advanced cost-saving features, Rev-Trac provides an easily demonstrable return on investment.

Because Rev-Trac lives inside the SAP environment, there are no hidden extras and no additional network, security, disaster recovery plan, DBA or desktop rollout requirements.

## Rev-Trac's place in the change management picture

Rev-Trac is installed in all systems within your SAP landscape and manages all changes as that landscape evolves. It does not replace the change management or help desk system you now use to manage changes across your whole organization.

## System requirements

Rev-Trac 6 is compatible with all SAP solution-based systems from SAP 4.0 onwards.

## Installation

Most sites install Rev-Trac, load system histories and begin full system monitoring in one day. Implementing actual change management processes can take one or two weeks, as the organization finalizes decisions regarding workflow, approvers, etc. End user training time is typically one to two hours in the classroom, or 30 minutes of training one-to-one.

**For more information, ask for a product demonstration of Rev-Trac today.**

### Revelation Software Concepts

Suite 8, 1020 Doncaster Road  
Doncaster East, Victoria 3109 Australia

**Telephone:** +61 3 9955 9700

**Email:** [info@xrsc.com](mailto:info@xrsc.com)

**Web:** [www.xrsc.com](http://www.xrsc.com)

**Rev-Trac**<sup>®</sup>  
Now you're really in control

## Technical specifics

- SAP certified as an ABAP add-on for NetWeaver 7
- Can manage mixed SAP versions from 4.0 onwards within a single installation
- Fully integrates with CTS, CTS+, and TMS, deploying ABAP, non-ABAP, and mixed transports
- Employs standard SAP security model, with SAP passwords, authorizations and profiles
- Provides complete flexibility in the definition of approval processes, organizational models and migration strategies
- Allows the creation of rules specifying what information (e.g. budgets, specifications) must be associated with change requests at different points in their lifecycle
- Provides fully flexible migration scheduling, and automatically promotes change requests through their lifecycle after successful auto-migration
- Automatically notifies users via email when work is ready for approval, has reached a certain stage, or when a migration failure requires investigation
- Extends the SAP locking concept beyond the time of release to reduce the risk of inadvertent parallel developments within a single system, or across multiple development systems
- Inbuilt features to simplify complex (5 system) system landscape 'retrofit' requirements
- Ensures quality management of concurrent, simultaneous changes across multiple landscapes and multiple technologies
- Automatically detects potential transport sequencing errors (overtaking and overwriting) for both configuration and workbench objects before migration
- Reports discrepancies between the planned and actual locations of changes within a landscape, and analyses differences between specific systems and clients using either current or historical data
- Can be integrated into other third-party Application Lifecycle Management (ALM) tools to increase cost savings through the integrated automation of ALM activities

**SAP**<sup>®</sup> Certified  
Powered by SAP NetWeaver<sup>®</sup>