



Manage change control audit risk and lower change management costs with your Rev-Trac SAP change control software system via an interactive data analysis graphical interface.

GlobalView is a web-based analysis tool designed to assist best-practice use of Rev-Trac and allow maximum ROI by revealing system health, configuration, and usage statistics via an interactive graphical dashboard.

With the use of multiple SAP Solutions, including dual stack ABAP and Java technologies and other non-ABAP technologies, and the increasing use of complex system landscapes, effective control and management of changes is becoming business critical. Add to this audit and compliance needs and GlobalView becomes an immediate and essential risk and cost management tool.

By uploading a Rev-Trac diagnostic report, users can instantly analyze recently configured processes and strategies, check for system errors, see what Rev-Trac features are being used and which ones are not, view graphics of Rev-Trac controlled SAP landscapes, check the change control team organizational structure and view an extensive range of historical usage information.

Having such information immediately available enables Rev-Trac users to fine tune their use of Rev-Trac, pick up system errors quickly and better understand how to use Rev-Trac to better enforce and automate SAP change control processes and activities.

GlobalView provides six key analysis areas which, when combined, provide a powerful view into the Rev-Trac change control system.

These six areas include:

- A system health viewer
- A change control process viewer
- A software feature usage viewer
- An interactive SAP landscape diagram viewer
- An organization viewer
- A complete view of a wide range Rev-Trac usage statistics

With GlobalView, customers can manage their costs and risks by analyzing their Rev-Trac change control configuration and usage using a secure portal to access a series of analysis areas via an easy to use dashboard.

Available views include:

- A process viewer with interactive flow charts that provide instant graphical visibility into all configured change control processes
- A feature usage analysis that shows which Rev-Trac features are in use and, more importantly, which are not and how to activate them to get full value
- A system health analysis that identifies configuration problem areas, providing advice on appropriate solutions
- An interactive landscape viewer that shows system and landscape details and structure
- A viewer that shows the configured organizational and team structures, specifying each team member's approval level/responsibilities
- Usage statistics that cover the number of transports managed, transport migrations, signatures received, change requests, documents attached, and more, enabling users to quickly gauge their Rev-Trac ROI

Rev-Trac system health viewer

Identify background job errors, transport creation rule errors and strategy and process errors.

Ensure inconsistencies in your Rev-Trac configuration and process strategies are identified.

Process flow chart viewer

Use the graphical process charts to identify process inefficiencies and areas of risk, including Sarbanes Oxley compliance risks.

Check process configuration to be certain the Rev-Trac configuration mirrors predetermined processes.

Feature usage viewer

Learn which Rev-Trac features are in use and, more importantly, which are not and how to activate them, ensuring the maximum Rev-Trac benefit is realized

Controlled SAP landscapes viewer

View an interactive graphical depiction of your entire SAP landscape and drilldown to see system details and list the associated clients. Quickly see in which systems Rev-Trac is installed or active / inactive.

Organizational structure viewer

Instantly check organizational and team structures, team member's approval level, number of approvers and authorization levels to ensure efficient workflow process and to protect against possible compliance and audit problems.

Usage statistics viewer

Get an instant view into the key usage statistics, ratios and trends, including the number of transports managed, number of transport migrations, number of signatures received, number of change requests, and documents attached, among many others.

Compare your own usage against the median usage to potentially highlight inefficiencies, under utilization, or counter-trends.

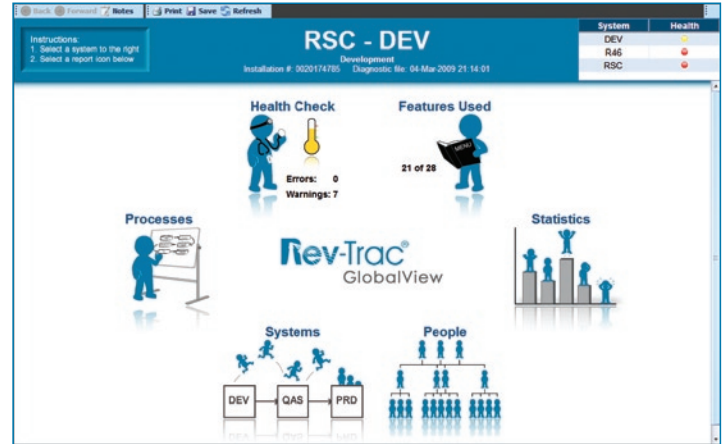


Figure 1 GlobalView Access Screen



Figure 2 GlobalView Usage Statistics Viewer

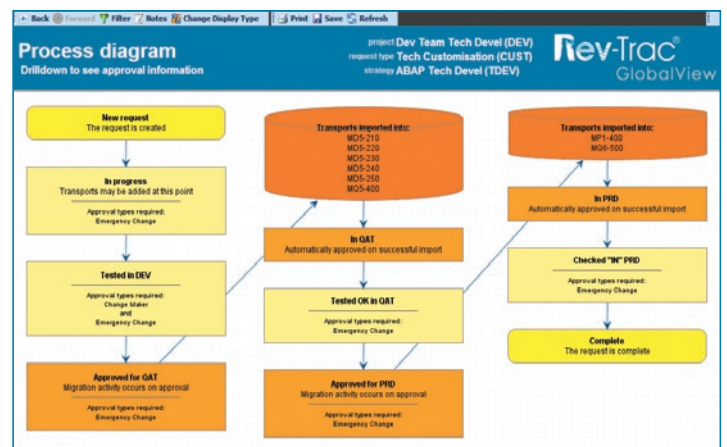


Figure 3 GlobalView Process Chart Viewer

To learn more, ask for a demonstration of Rev-Trac GlobalView today.

Revelation Software Concepts
Suite 8, 1020 Doncaster Road
Doncaster East, Victoria 3109 Australia
Telephone: +61 3 9955 9700
Email: info@xsrc.com
Web: www.xsrc.com

